



# GMT MONTHLY MEMBERSHIP PROGRESS REPORT

Results as of: 1/31/2024

Multiple District 317

LOCATION: INDIA

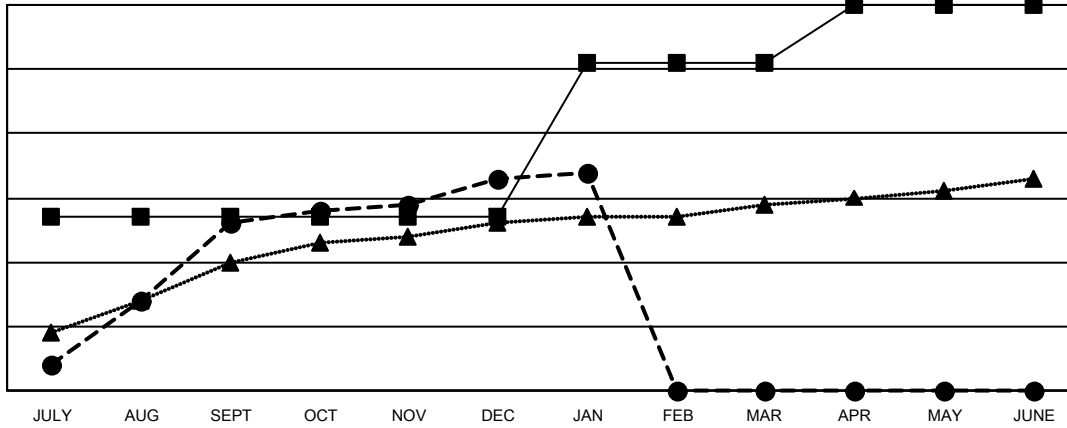
GMT: OPEN

GMT CA 6 - I

Clubs			
RESULTS FOR 2023-2024			
QUARTER	NEW CLUB GOAL	NEW CLUBS	DROPPED CLUBS
JULY/AUG/SEPT	27	26	12
OCT/NOV/DEC	0	7	26
JAN/FEB/MAR	24	1	3
APR/MAY/JUNE	9	0	0

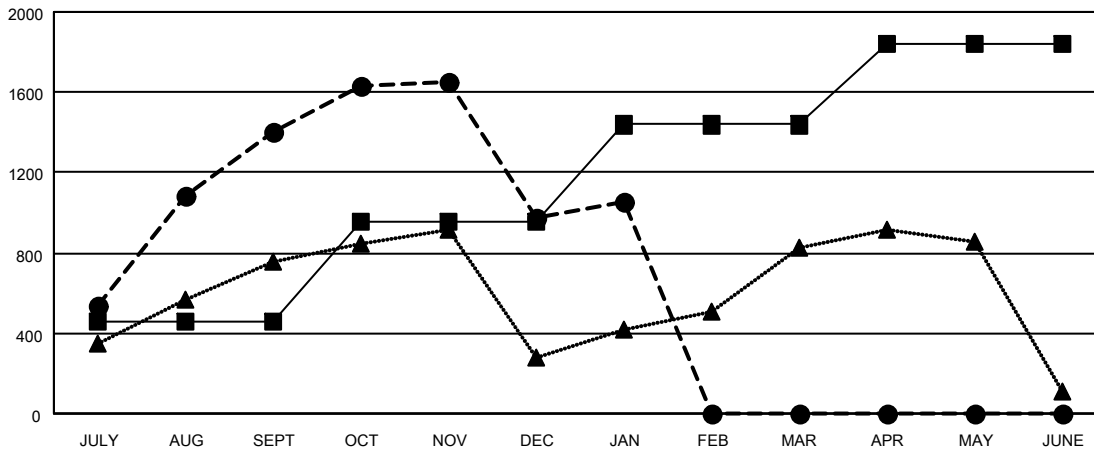
Members			
RESULTS FOR 2023-2024			
QUARTER	MEMBER GROWTH NET GOAL	MEMBER GROWTH ACTUAL	DROPPED MEMBERS ACTUAL (including transfers)
JULY/AUG/SEPT	458	2,018	550
OCT/NOV/DEC	500	813	1,198
JAN/FEB/MAR	480	221	107
APR/MAY/JUNE	405	0	0

GOALS AND ACTUAL NEW CLUBS CUMULATIVE



- - CURRENT YEAR GOALS FOR NEW CLUBS
- - CURRENT YEAR ACTUAL NEW CLUBS
- ▲ - LAST YEAR ACTUAL NEW CLUBS

GOALS AND ACTUAL MEMBERS CUMULATIVE



- - MEMBER GROWTH NET GOAL
- - MEMBER GROWTH ACTUAL
- ▲ - LAST YEAR MEMBERSHIP ACTUAL

DROPPED CLUBS: 41	
<b>DROPPED MEMBERS</b>	
DECEASED	50
CLUB CANCELLED	520
OTHER	1,285
<b>TOTAL</b>	<b>1,855</b>

428 CLUBS OF 697 ADDED 1 OR MORE NEW MEMBERS

[CLICK HERE FOR CUMULATIVE MEMBERSHIP DATA](#)

<b>GENDER DISTRIBUTION</b>	
MALE	15,794 (74.26%)
FEMALE	5,474 (25.74%)
TOTAL FAMILY UNIT MEMBERS	7,452
FAMILY MEMBERS PAYING HALF DUES	4,047